

## Modular Cooking Range Line EVO700 6-Burner Gas Range on Large Gas Oven

ITEM # \_\_\_\_\_

MODEL # \_\_\_\_\_

NAME # \_\_\_\_\_

SIS # \_\_\_\_\_

AIA # \_\_\_\_\_

**372216 (Z7GCGI6CLA)**6-burner (5,5 kW each) gas  
range on large gas oven (9  
kW) - (AGA)

### Main Features

- Unit to be mounted on stainless steel feet with height adjustment up to 50 mm. Unit can be easily mounted on cantilever systems.
- Gas appliance supplied for use with natural or LPG gas, conversion jets supplied as standard.
- Large sized pan support in cast iron (stainless steel as option) with long center fins to allow the use of the largest down to the smallest pans.
- Burners with optimized combustion.
- Flame failure device on each burner protects against gas leakage when accidental extinguishing of the flame occurs.
- Protected pilot light.
- 40 mm thick oven door for heat insulation.
- The special design of the control knob system guarantees against water infiltration.
- IPX5 water protection.
- Maximum temperature of 300°C.
- Ribbed enamelled steel oven base plate.
- Base compartment consists of a gas heated standard oven with stainless steel burners and self stabilizing flame positioned beneath the base plate.
- The six 5.5 kW high efficiency flower flame burners allow the flame to adapt to different size pans.
- Control knobs provide smooth, continuous rotation from min to max power level.

### Construction

- All exterior panels in Stainless Steel with Scotch Brite finishing.
- Model has right-angled side edges to allow flush fitting joints between units, eliminating gaps and possible dirt traps.
- Unit is 730mm deep to give a larger working surface area

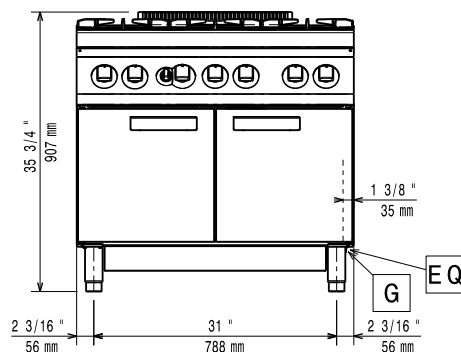
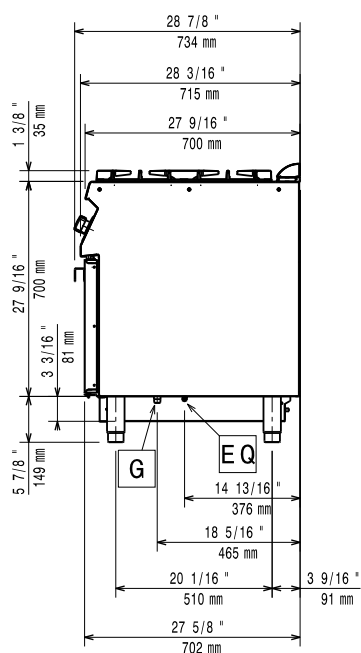
### Optional Accessories

- |  |            |                          |
|--|------------|--------------------------|
| • Junction sealing kit   | PNC 206086 | <input type="checkbox"/> |
| • 4 wheels, 2 swivelling with brake (EVO700/900). It is mandatory to install with base supports for feet/wheels. | PNC 206135 | <input type="checkbox"/> |
| • Flanged feet kit   | PNC 206136 | <input type="checkbox"/> |
| • Frontal handrail 400 mm  | PNC 206166 | <input type="checkbox"/> |
| • Frontal handrail 800 mm  | PNC 206167 | <input type="checkbox"/> |
| • Large handrail (portioning shelf) 400 mm   | PNC 206185 | <input type="checkbox"/> |
| • Large handrail (portioning shelf) 800 mm   | PNC 206186 | <input type="checkbox"/> |
| • Frontal handrail 1200 mm   | PNC 206191 | <input type="checkbox"/> |
| • Frontal handrail 1600 mm   | PNC 206192 | <input type="checkbox"/> |
| • Right and left side handrails  | PNC 206240 | <input type="checkbox"/> |

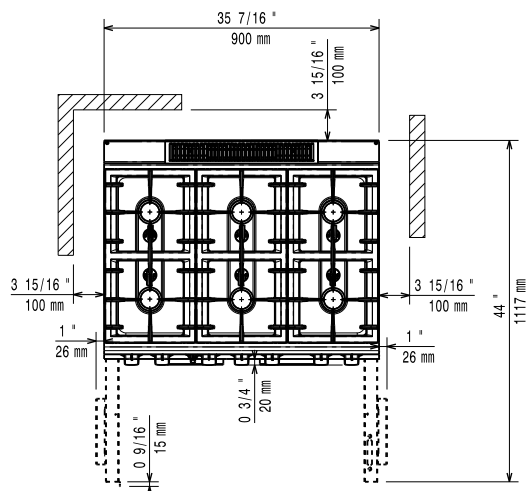
APPROVAL: \_\_\_\_\_

• Single burner smooth plate for direct cooking - fits frontal burners only	PNC 206260	<input type="checkbox"/>
• Single burner ribbed plate for direct cooking- fits frontal burners only	PNC 206261	<input type="checkbox"/>
• Single burner radiant plate for pan support	PNC 206264	<input type="checkbox"/>
• Pair of side kicking strips (concrete installation)	PNC 206265	<input type="checkbox"/>
• Water column with swivel arm (water column extension not included)	PNC 206289	<input type="checkbox"/>
• Stainless steel grid for 2 burners	PNC 206297	<input type="checkbox"/>
• 2 side covering panels, height 700 mm, depth 700 mm	PNC 206319	<input type="checkbox"/>
• Wok pan support for open burners (EVO700/900)	PNC 206363	<input type="checkbox"/>
• Base support for feet or wheels - 800mm (EVO700/900)	PNC 206367	<input type="checkbox"/>
• BASE SUPP. FOR FEET/WHEELS LATERAL 700	PNC 206371	<input type="checkbox"/>
• Rear paneling - 1200mm (EVO700/900)	PNC 206376	<input type="checkbox"/>
• Chimney grid net, 500mm	PNC 206402	<input type="checkbox"/>
• Pressure regulator for gas units	PNC 927225	<input type="checkbox"/>

# Modular Cooking Range Line EVO700 6-Burner Gas Range on Large Gas Oven

**Front**

**Side**


**G** = Gas connection

**Top**


## Gas

LPG Gas G30/G31 (28-30/37mbar)

**Gas Power:** 42 kW

**Standard gas delivery:** Natural Gas G20 (20mbar)

**Gas Type Option:** LPG;Town

**Gas Inlet:** 1/2"

## Key Information:

**Oven working Temperature:** 110 °C MIN; 300 °C MAX

**Oven Cavity Dimensions (width):** 760 mm

**Oven Cavity Dimensions (height):** 390 mm

**Oven Cavity Dimensions (depth):** 540 mm

**Net weight:** 106 kg

**Shipping weight:** 126 kg

**Shipping height:** 1100 mm

**Shipping width:** 820 mm

**Shipping depth:** 900 mm

**Shipping volume:** 0.81 m<sup>3</sup>

**Front Burners Power:** 5.5 - 5.5 kW

**Back Burners Power:** 5.5 - 5.5 kW

**Middle Burners Power:** 5.5 - 0/5.5 - 0 kW

**[NOT TRANSLATED]** N7CG

**Back Burners Dimension - mm** Ø 60 Ø 60

**Front Burners Dimension - mm** Ø 60 Ø 60

**Middle Burners Dimension - mm** Ø 60 Ø 60

If appliance is set up or next to or against temperature sensitive furniture or similar, a safety gap of approximately 150 mm should be maintained or some form of heat insulation fitted.

Modular Cooking Range Line  
EVO700 6-Burner Gas Range on Large Gas Oven

The company reserves the right to make modifications to the products without prior notice. All information correct at time of printing.

2025.04.26